

August Square

By Lorena Haldeman

Finished Measurements

Approximately 11" x 11", depending on gauge

Materials

Any worsted weight yarn that gets between 4-5 sts/inch

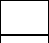
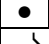
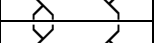
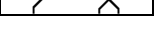
US size 7-9, depending on gauge

Pattern Notes

This pattern is only charted. Do not be afraid! Charts are not as scary as you might think.

If you want your square to be larger, we recommend adding extra purl stitches in between the five columns.

Below is the legend, which is also posted directly under the pattern chart:

	Knit on right side; purl on wrong side
	Purl on right side; knit on wrong side
	Cable 4 front - Slip 2 sts onto DPN, hold in front; knit 2, knit 2 from DPN
	Cable 4 back - Slip 2 sts onto DPN, hold in back; knit 2, knit 2 from DPN



Instructions

Cast on 52

Knit four rows

Follow the chart below; remember that right-side rows are read right to left; wrong-side rows are read left to right.

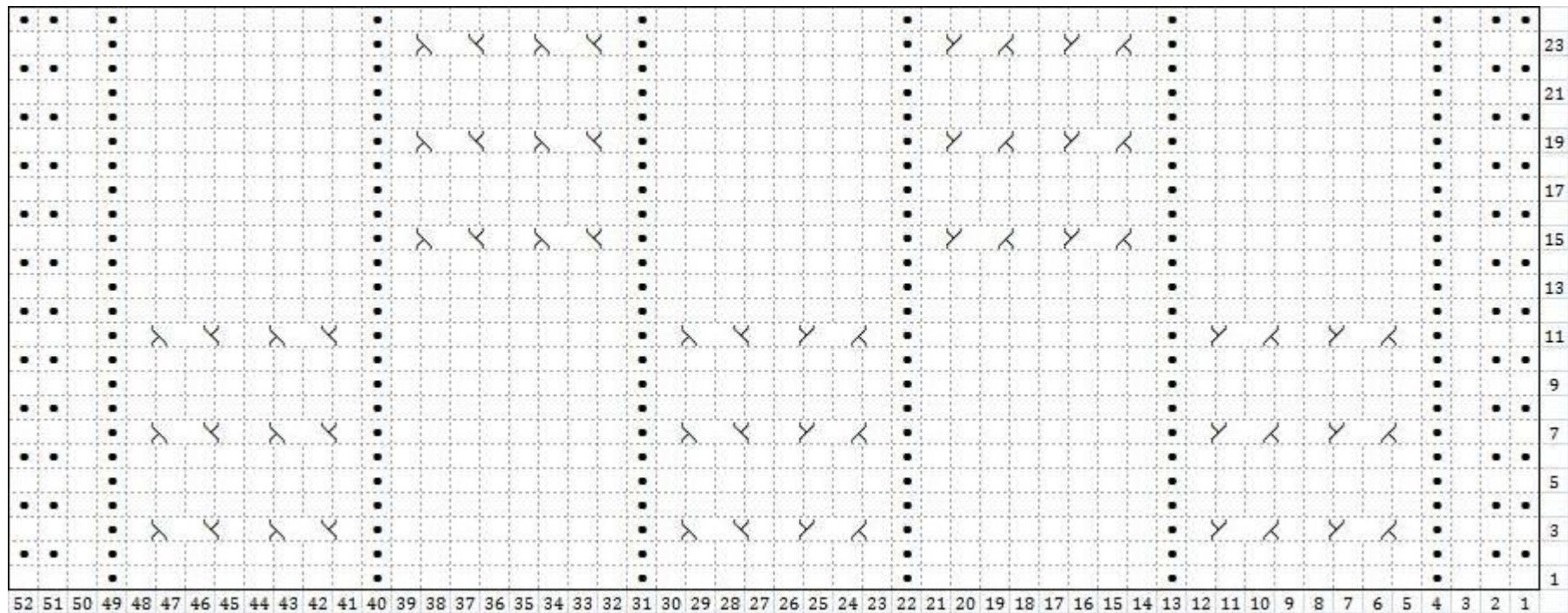
Repeat chart twice; your row gauge may vary-- feel free to stop after completing any right-side row that gives you a length half an inch shorter than the width of your square, even if you have done less than two (or more than) two chart repeats.

Knit four rows

Bind off

Finishing

Weave in ends; block



- Knit on right side; purl on wrong side
- Purl on right side; knit on wrong side
- Cable 4 front - Slip 2 sts onto DPN, hold in front; knit 2, knit 2 from DPN
- Cable 4 back - Slip 2 sts onto DPN, hold in back; knit 2, knit 2 from DPN